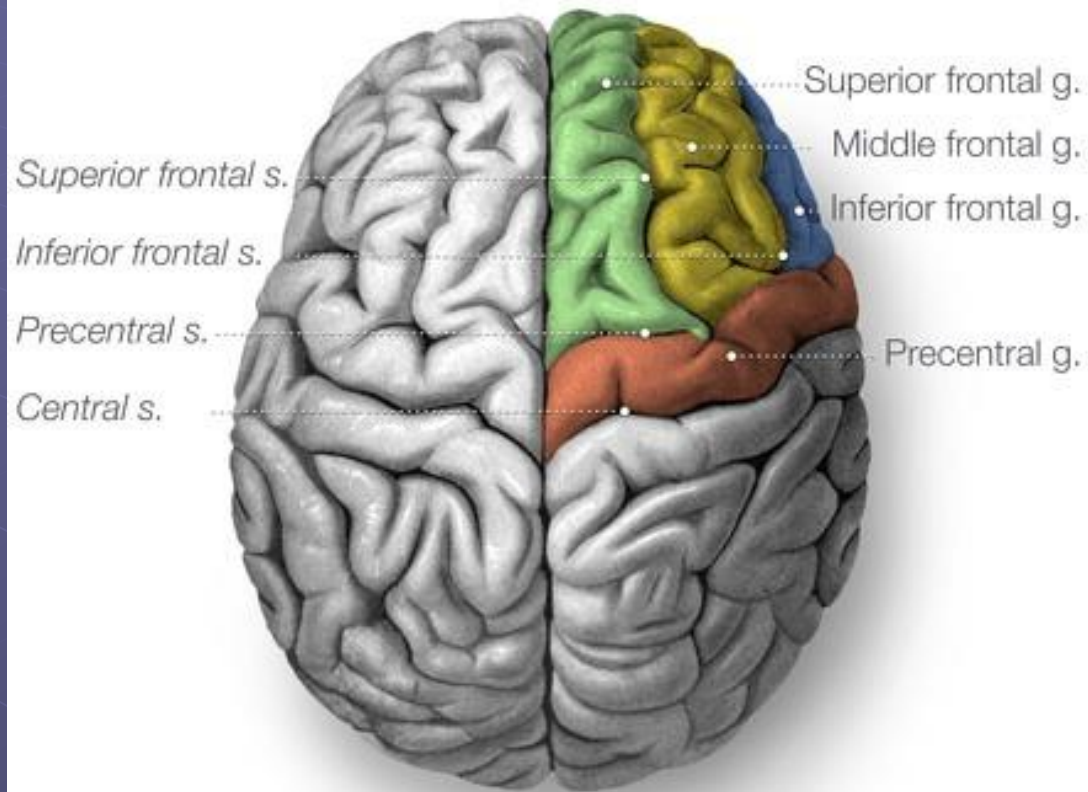
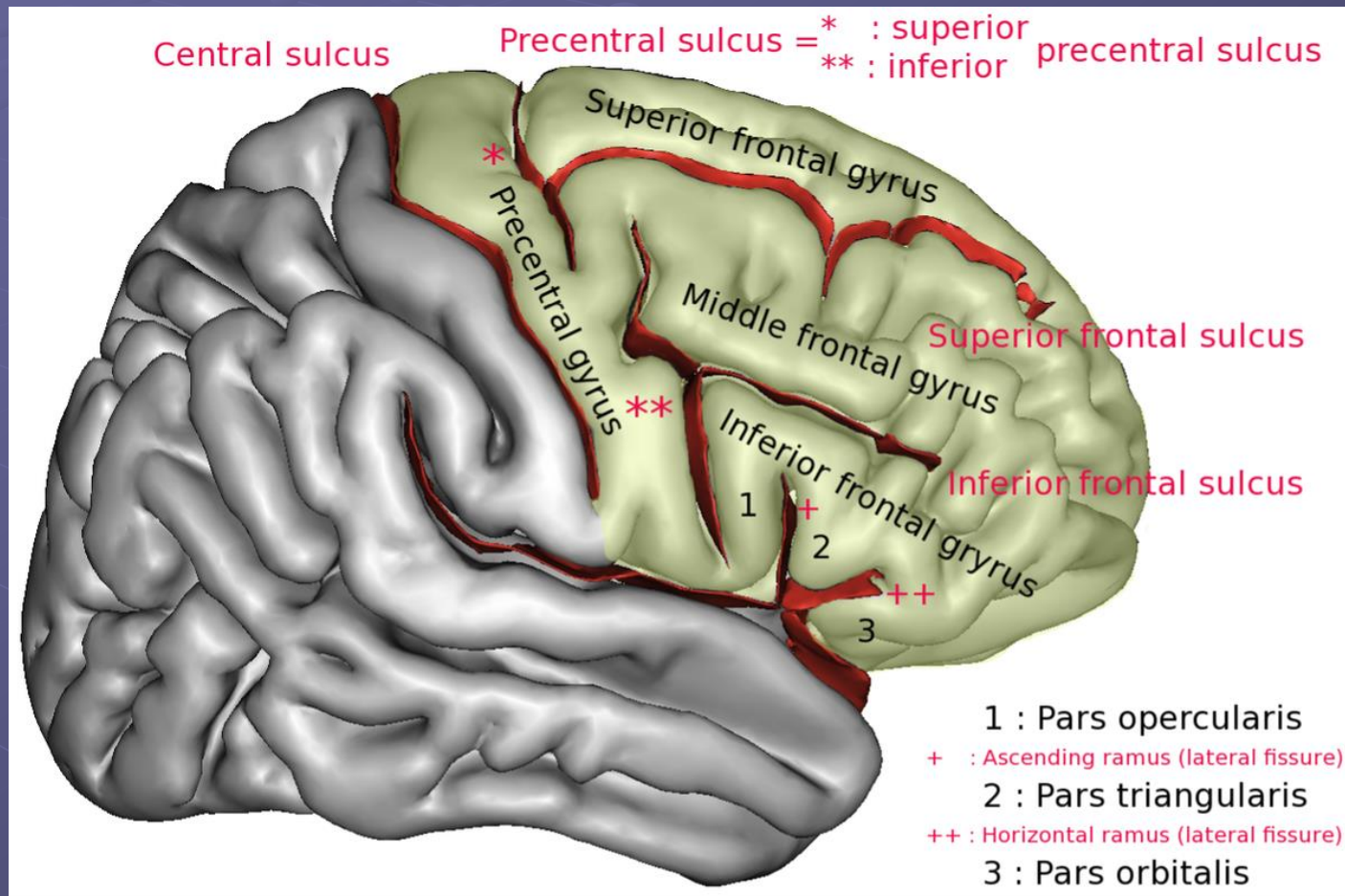
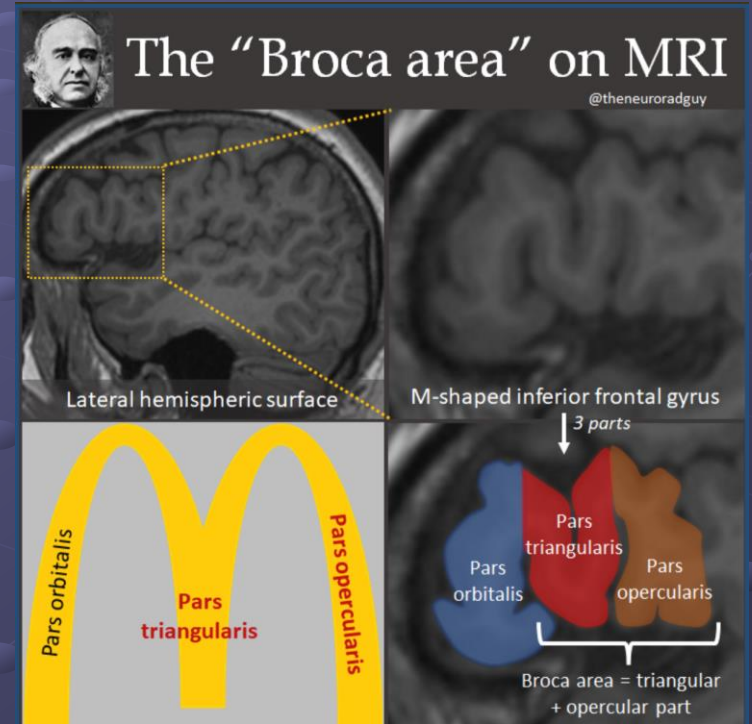
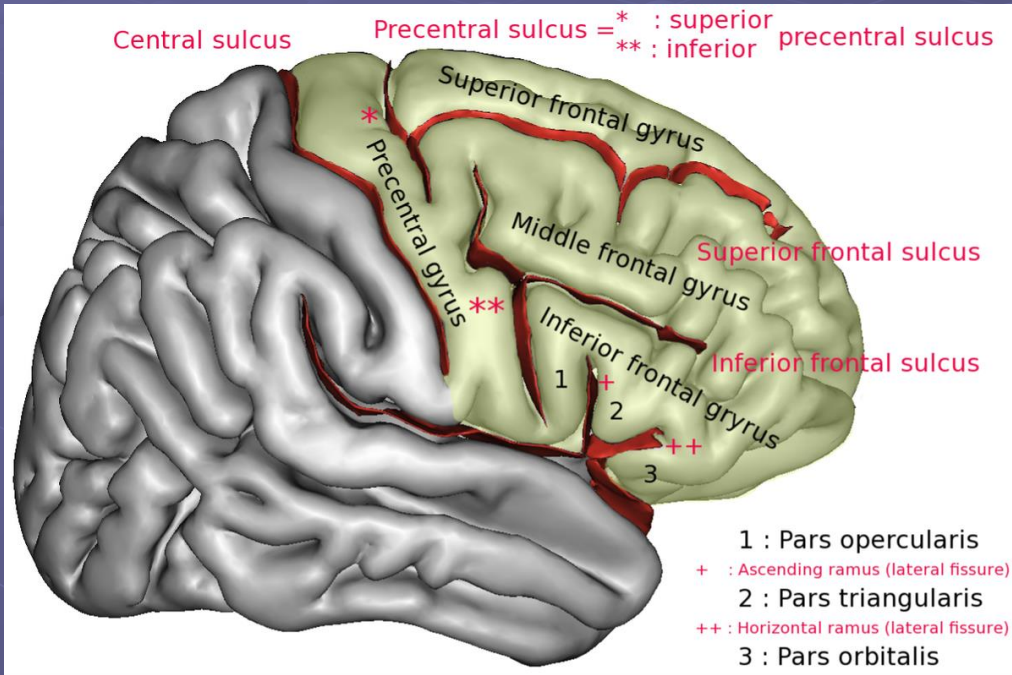


Frontal lobe

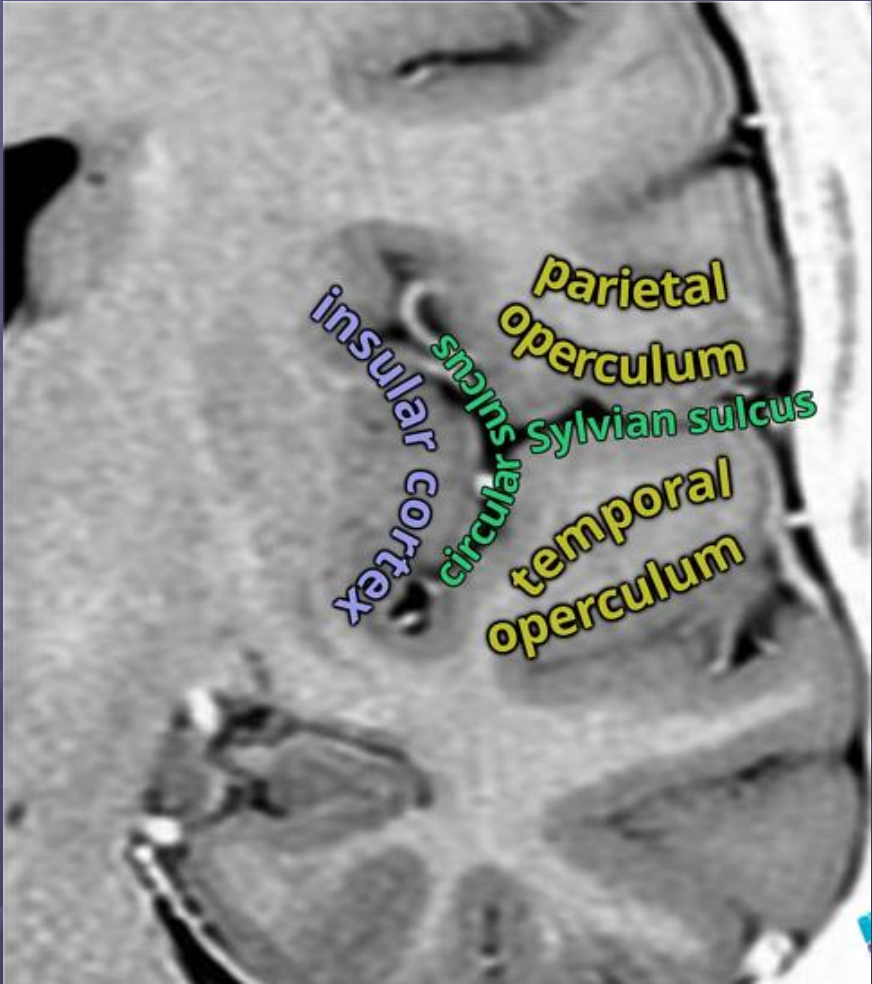
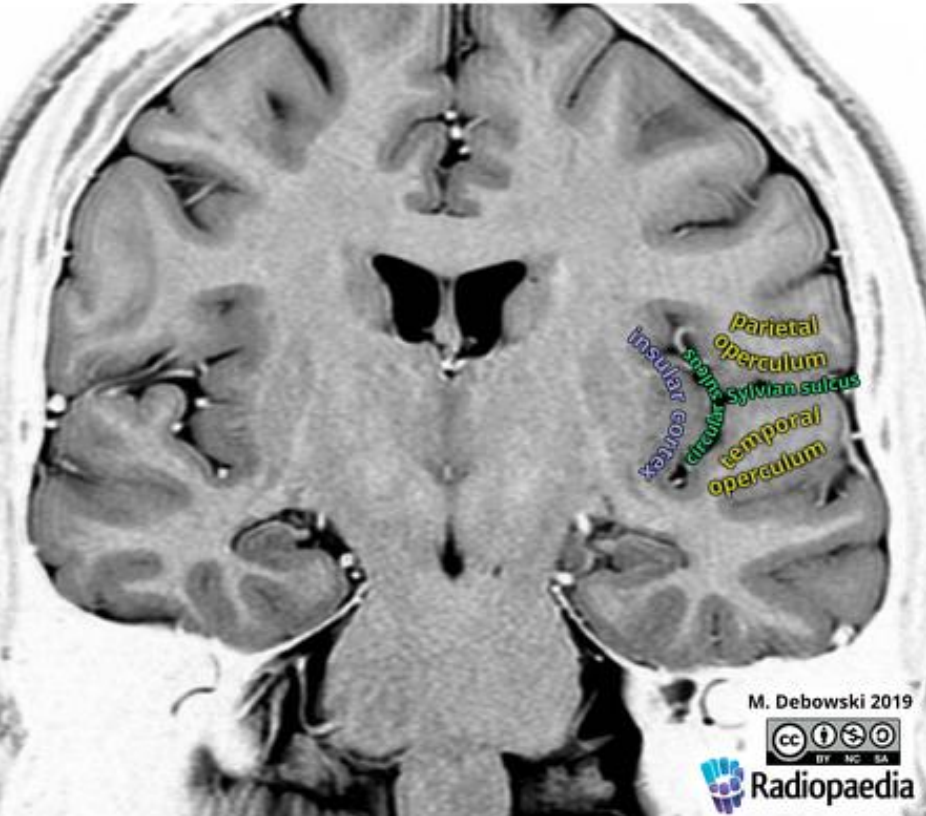


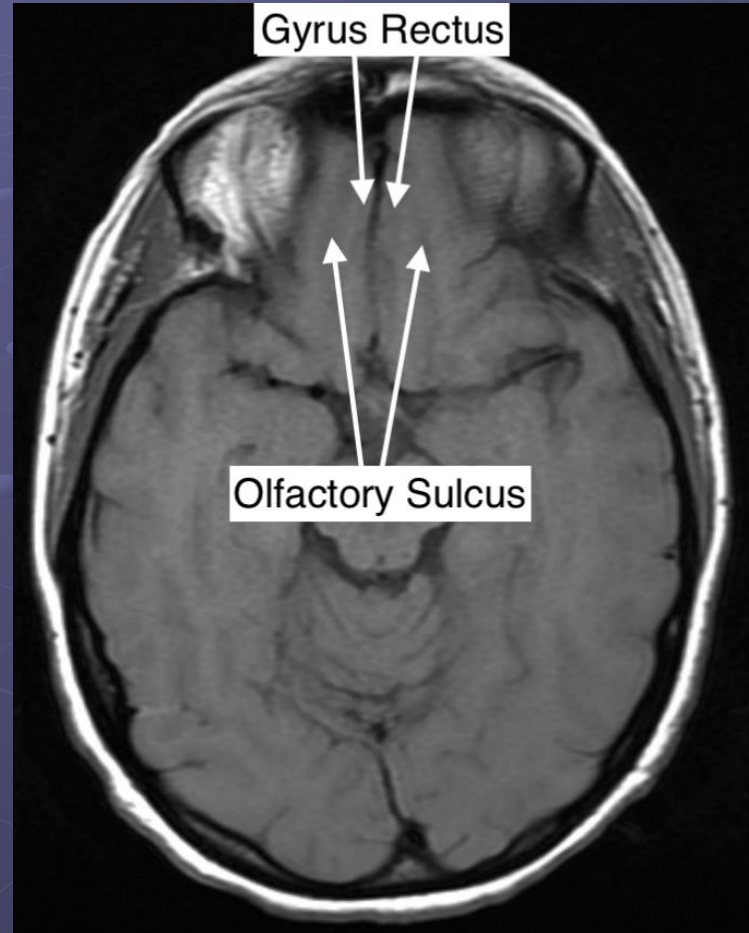
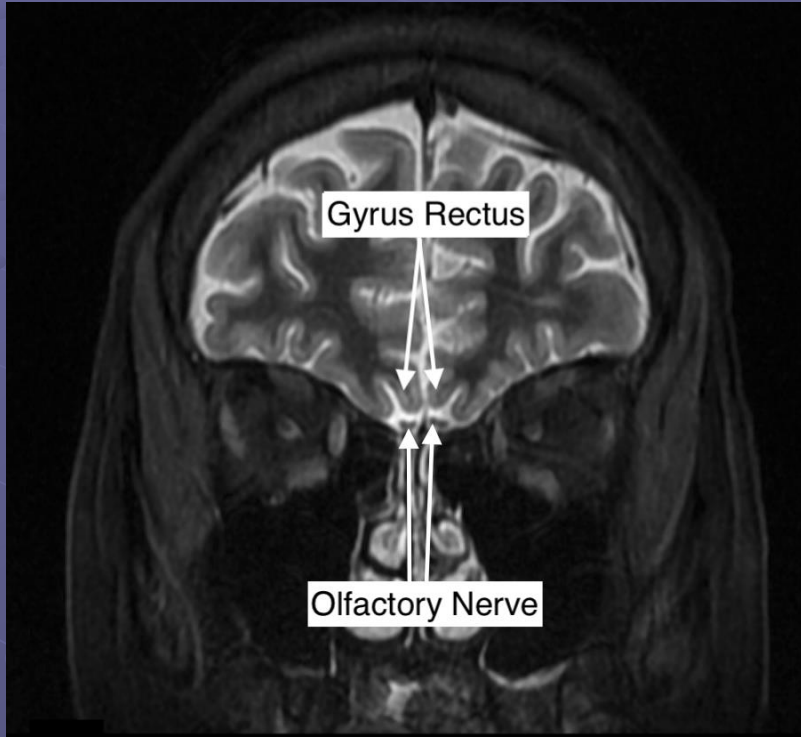
Frontal lobe





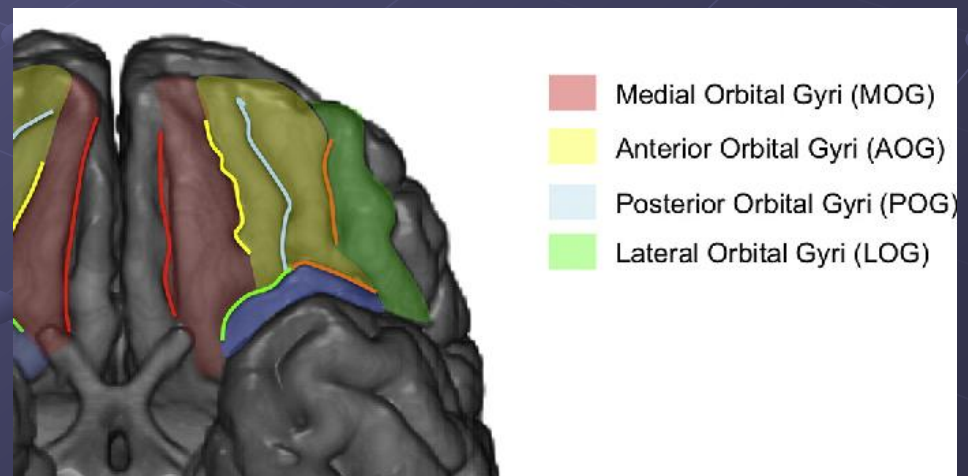
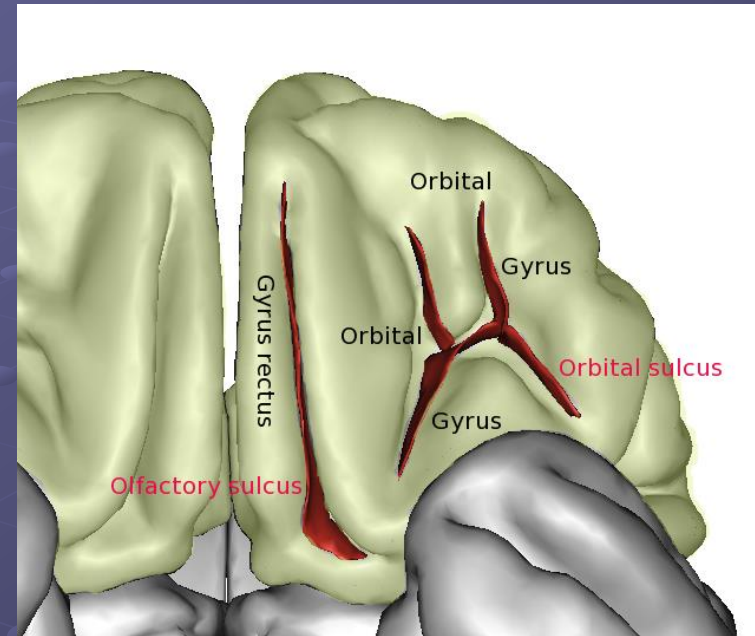
Insula and operculum



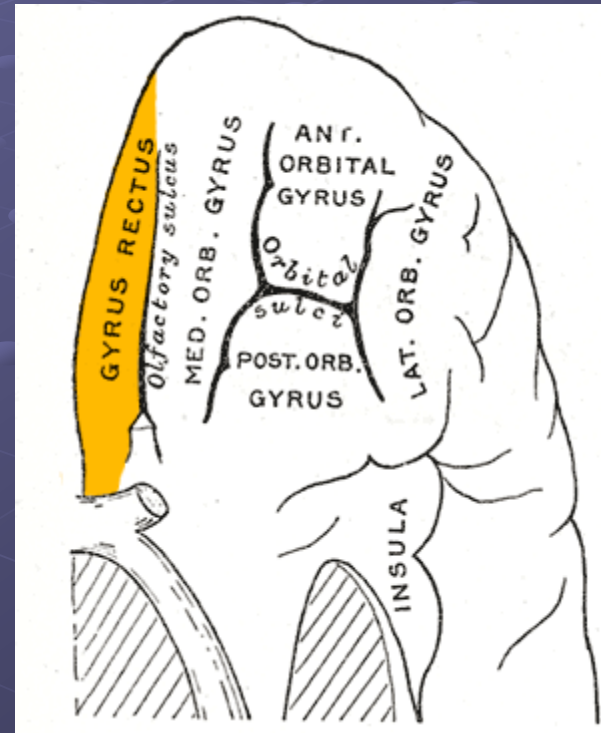
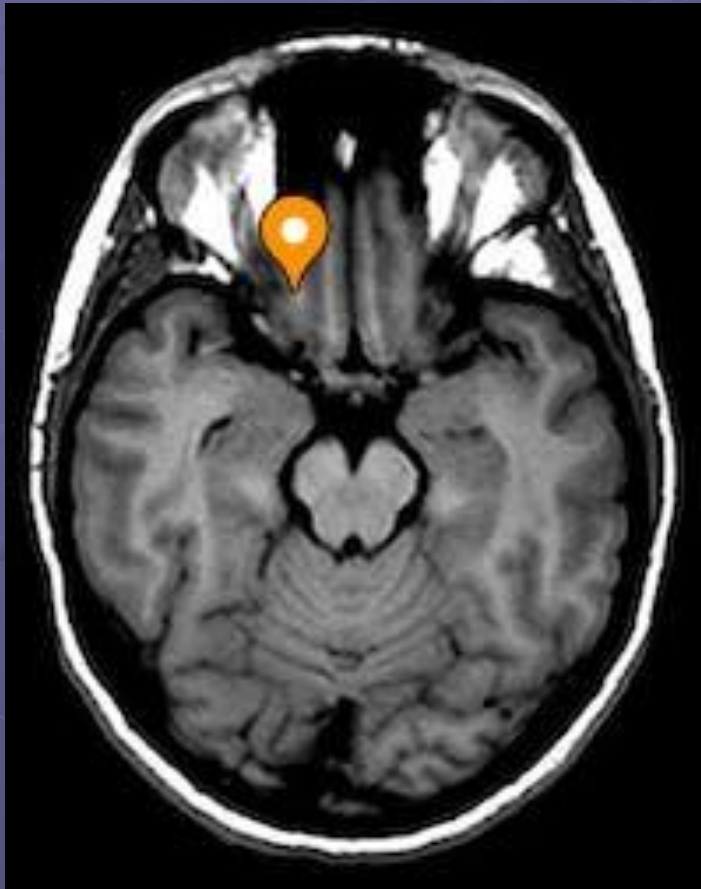


Orbital Gyri

- Divided into four orbital gyri by a well-marked H-shaped orbital sulcus
 - Medial
 - Anterior
 - Lateral
 - Posterior



Medial Orbital Gyrus



Medial orbital gyrus

1

Anterior orbital gyrus

2

3

Lateral orbital gyrus

4

Posterior orbital gyrus

