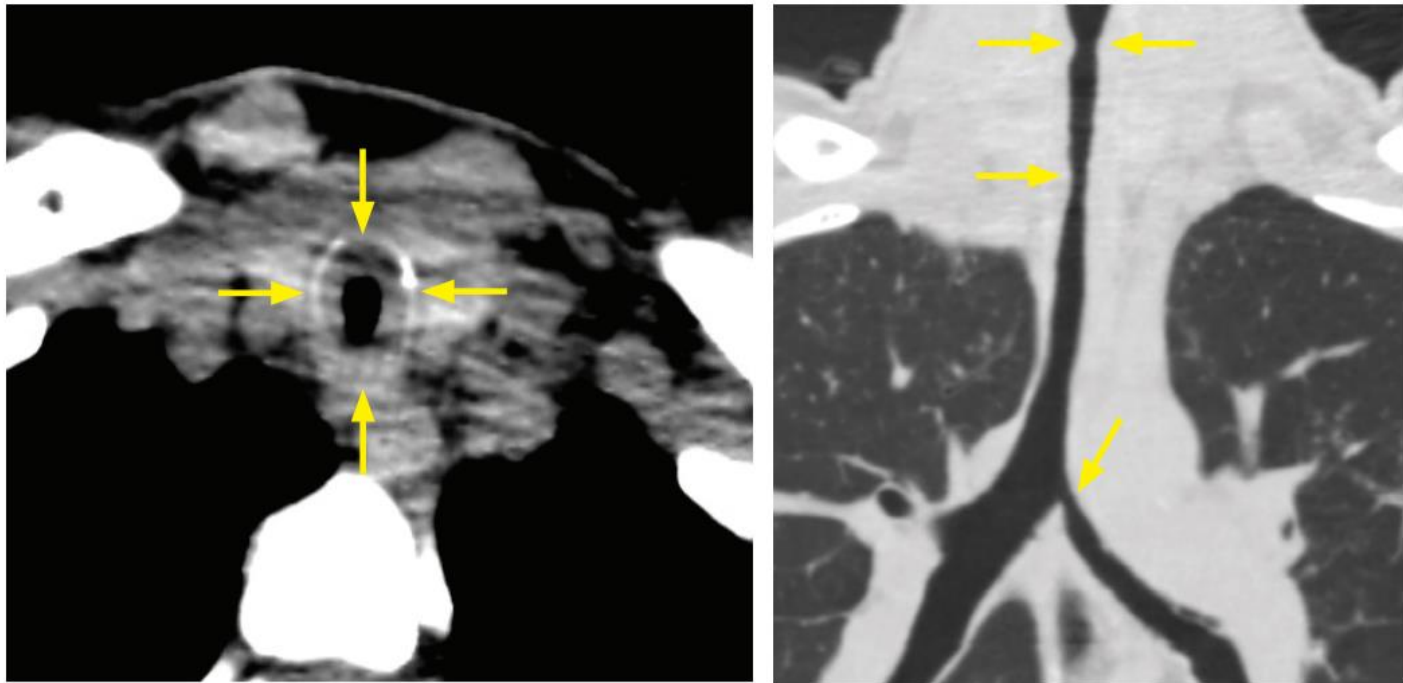


Tuberculosis



Tracheal tuberculosis: Axial CT in soft-tissue window through the upper trachea (left image) shows circumferential tracheal thickening (arrows). Coronal curved-multiplanar reformation (right image) shows multifocal tracheal stenosis (arrows) and left mainstem bronchus stenosis. These images were obtained approximately one month after treatment for active post-primary TB.

Case courtesy Ritu R. Gill, MD, MPH, Brigham and Women's Hospital.

- Airway involvement by TB occurs in a prominent minority of patients with pulmonary TB, most commonly involving the distal trachea and proximal bronchi.
- Imaging findings are nonspecific. There is usually smooth concentric narrowing of a relatively long airway segment (typically >3 cm).