

DWI

PI-RADS Assessment – DWI

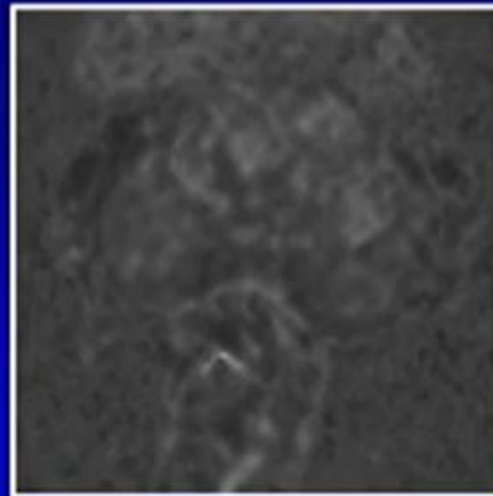
- ADC map from 2 or more b-values
 - Low 0-100s/mm²
 - High 800-1000s/mm²
- High b-value ≥ 1400 s/mm²
- ADC threshold of 750-900 $\mu\text{m}^2/\text{sec}$ may assist differentiation between benign and malignant prostate tissues

- ADC at 50 and 800 at Hopkins
- Calculate B value at 1400
- Less artifact if calculated vs obtaining it at 1400

PZ and TZ scored same on DWI

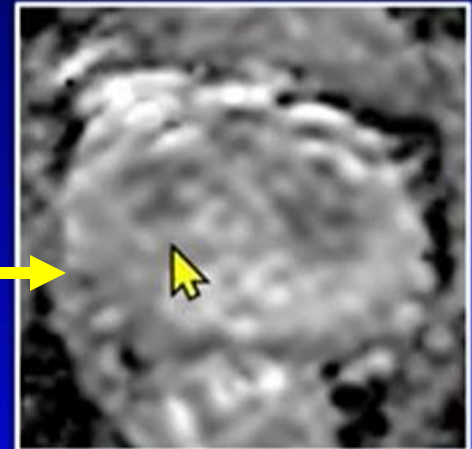
PI-RADS Assessment – DWI PZ or TZ

- Score 1:
 - No abnormality on ADC and high b-value DWI



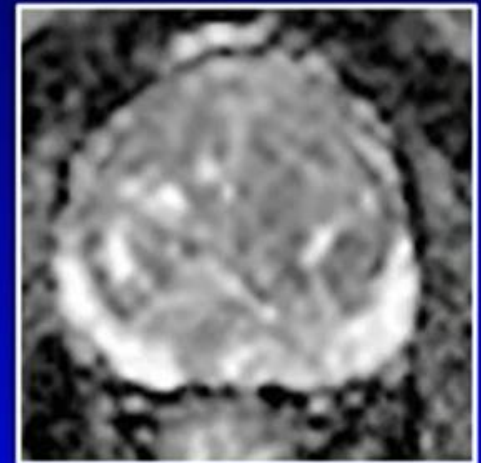
PI-RADS Assessment – DWI PZ or TZ

- Score 2:
 - Linear/wedge shaped hypointensity on ADC
 - Linear/wedge shaped hyperintensity on high b-value DWI



PI-RADS Assessment – DWI PZ or TZ

- Score 3:
 - Focal hypointense on ADC
 - Focal hyperintense on high b-value DWI
 - Markedly hypointense on ADC or markedly hyperintense on high b-value DWI, but not both

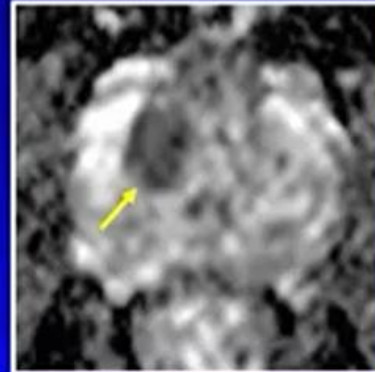
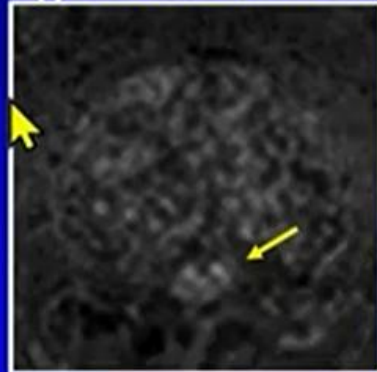


- Blood and Fibrosis: dark on both

Different Patients

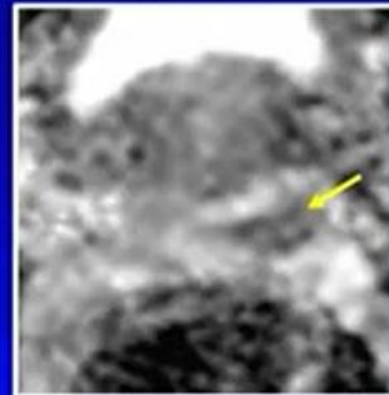
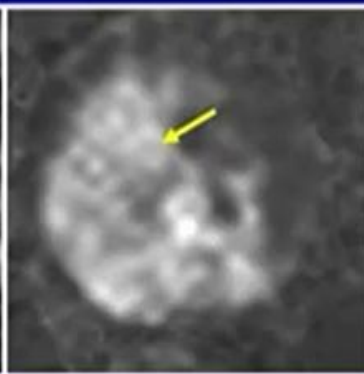
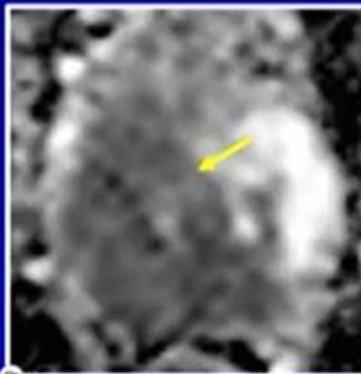
PI-RADS Assessment – DWI PZ or TZ

- Score 4:
 - Focal markedly hypointense on ADC and markedly hyperintense on high b-value DWI
 - <1.5cm in greatest dimension

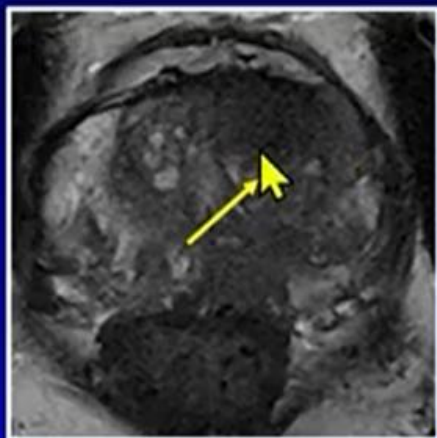


PI-RADS Assessment – DWI PZ or TZ

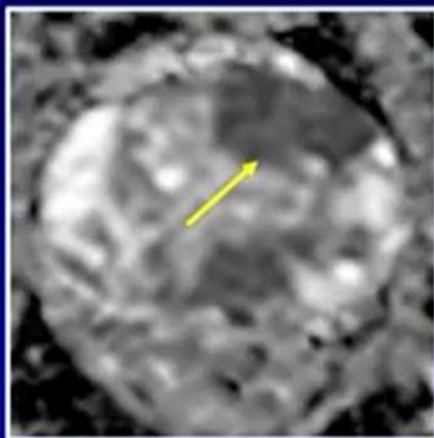
- Score 5:
 - Same as 4
 - $\geq 1.5\text{cm}$ in greatest dimension
 - Definite extraprostatic extension/invasive behavior



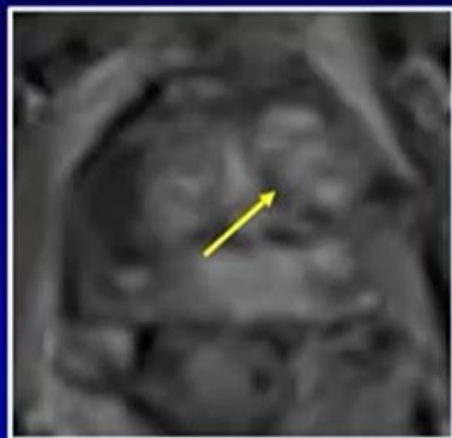
PI-RADS 5 (TZ)



T2: 5



DWI: 5



DCE: +