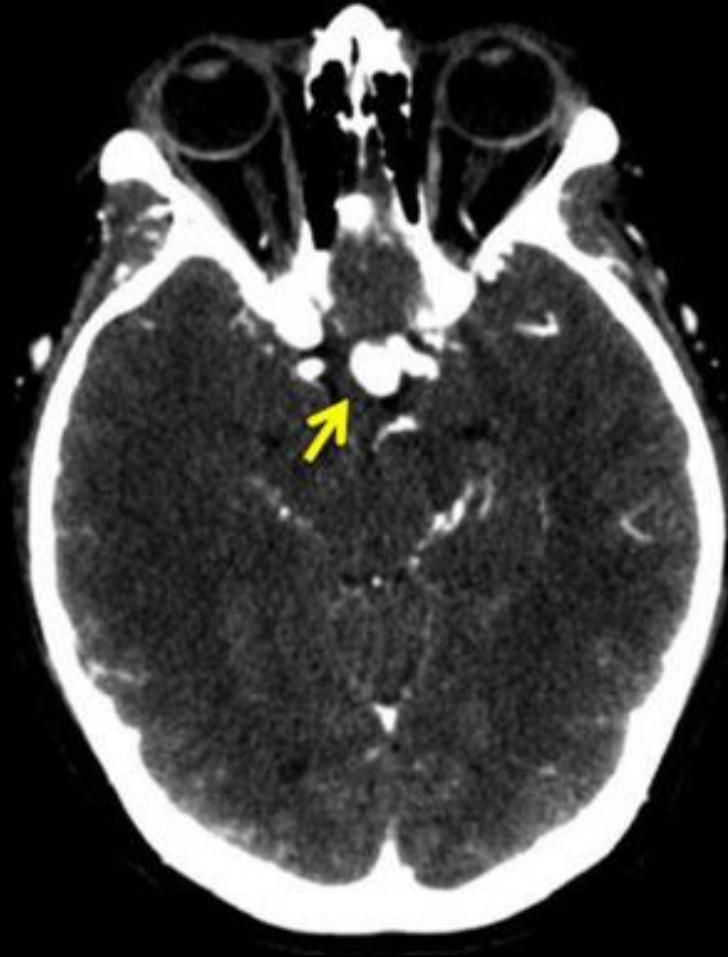


Superior hypophyseal aneurysm

- SHA aneurysms are rare.
- They arise from the internal carotid artery between the origins of the ophthalmic and the posterior communicating arteries and project medially.
- These aneurysms are intradural and may result in subarachnoid hemorrhage.
- Due to anatomic obstacles in this area, surgical clipping of SHA aneurysms is invariably challenging.
- Endovascular therapy has been used frequently to treat these aneurysms in many centers, both here and abroad

Superior hypophyseal aneurysm

- Female sex predominance (90.8%) for SHA aneurysms.
- Tendency toward multiple aneurysms is another unique characteristic of SHA and paraclinoid aneurysms





Frontal views of DSA of the left internal carotid artery, demonstrating a large SHA aneurysm in a 58-year-old woman (A). The aneurysm was treated with coil embolization (B) and showed complete occlusion at 6-month follow-up angiography