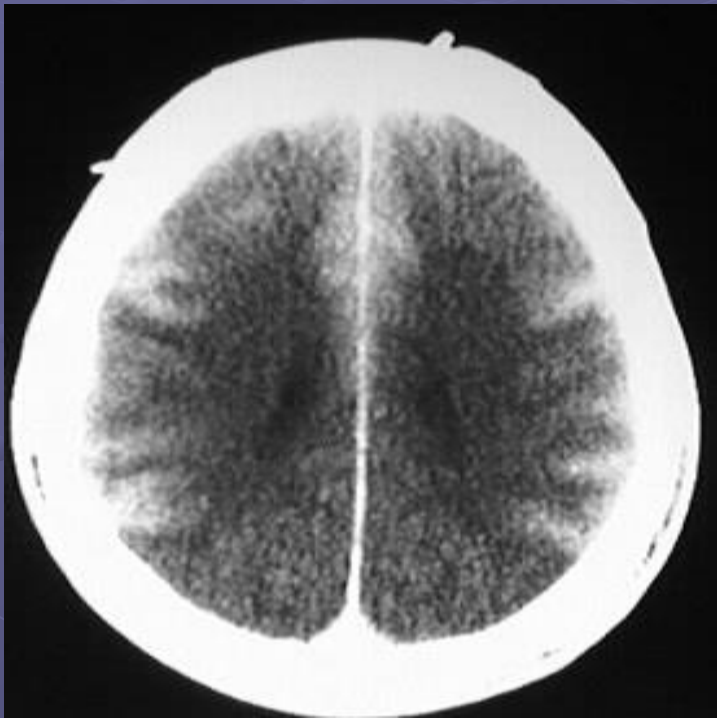
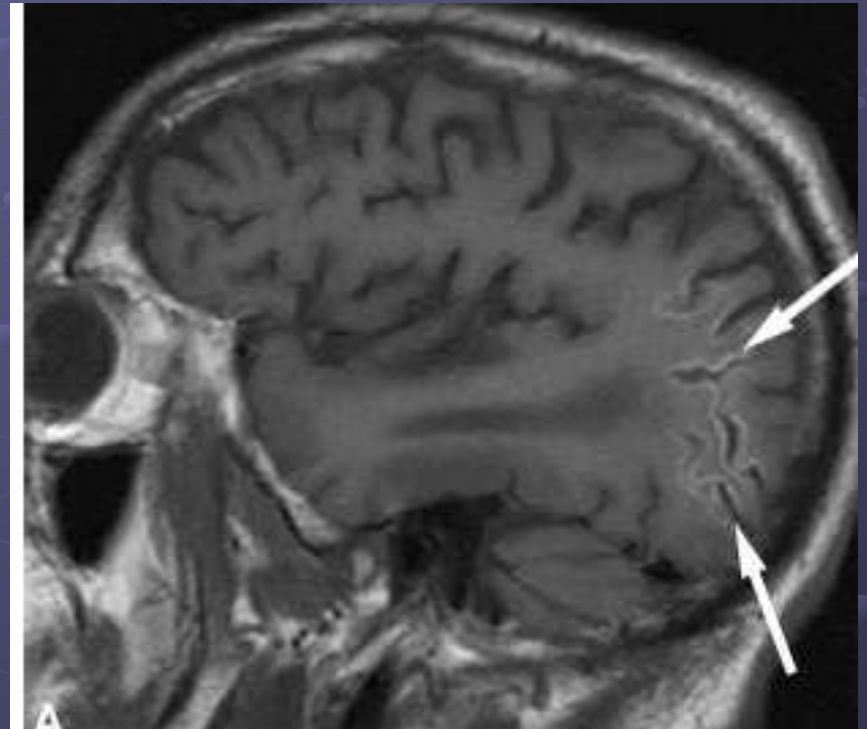


Laminar Necrosis



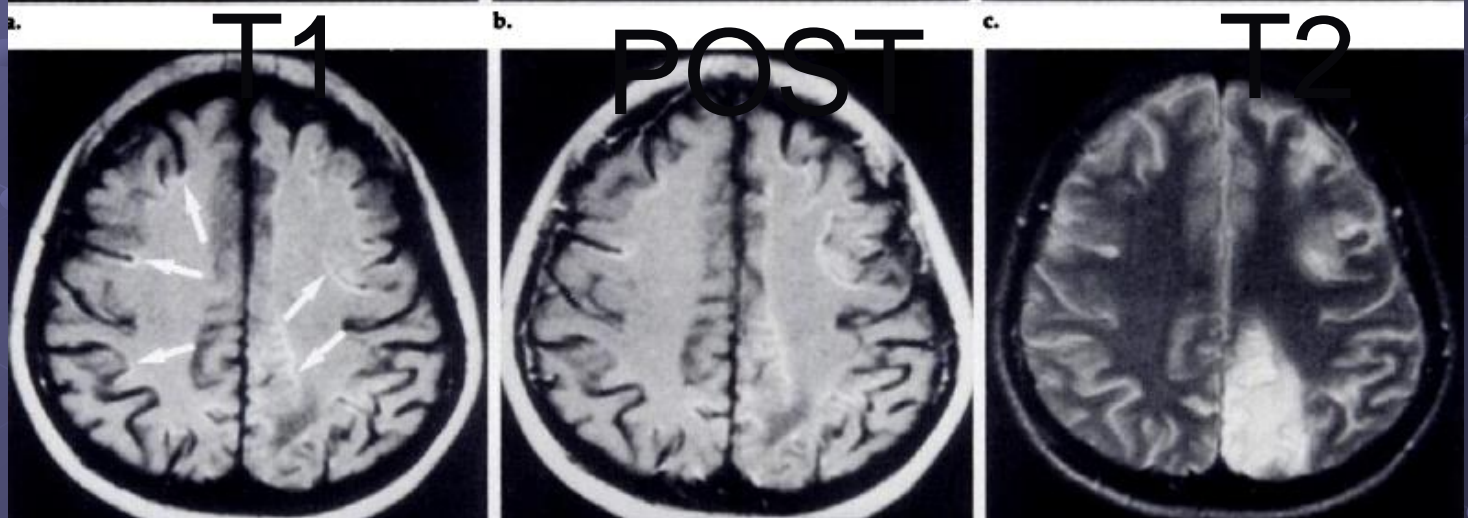
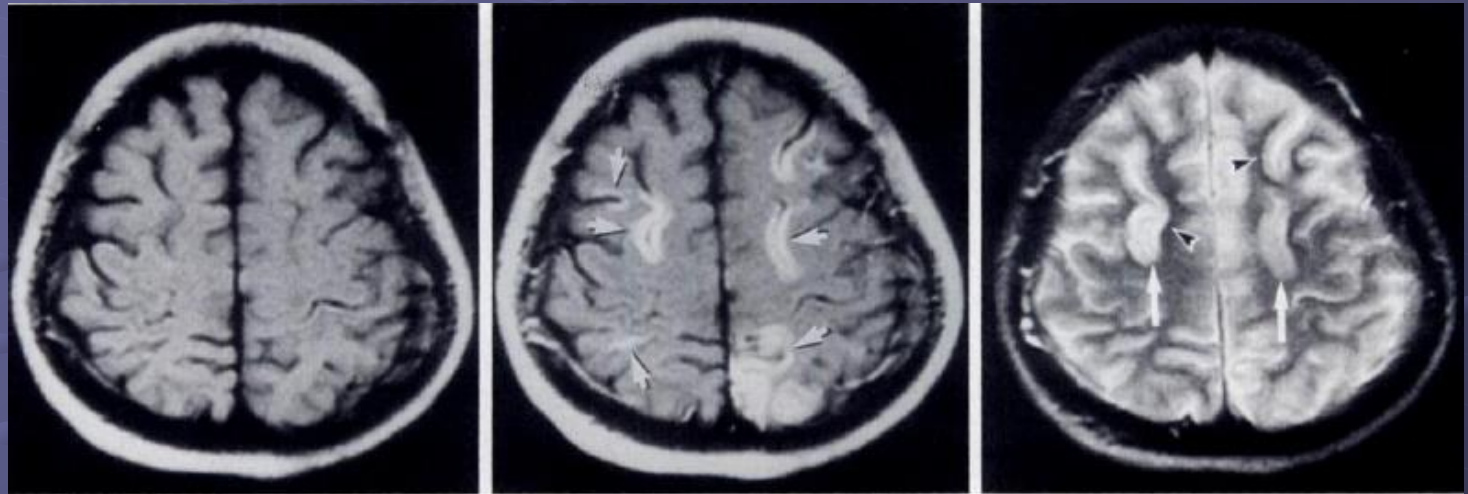
Cortical enhancement



Delayed imaging
2-3 weeks

Laminar Necrosis after Hypotensive episode

Early



51 days
later

Cortical laminar necrosis

- Cortex is 6 layers, 3rd layer is most vulnerable
- Cortical laminar necrosis is a specific type of cortical infarction, which usually develops as a result of generalized hypoxia rather than a local vascular abnormality.
- Depletion of oxygen or glucose
 - Anoxia
 - Hypoglycemia
 - status epilepticus
 - ischemic stroke
 - Immunosuppressive therapy (cyclosporin A and FK506),
 - polychemotherapy (vincristine and methotrexate)