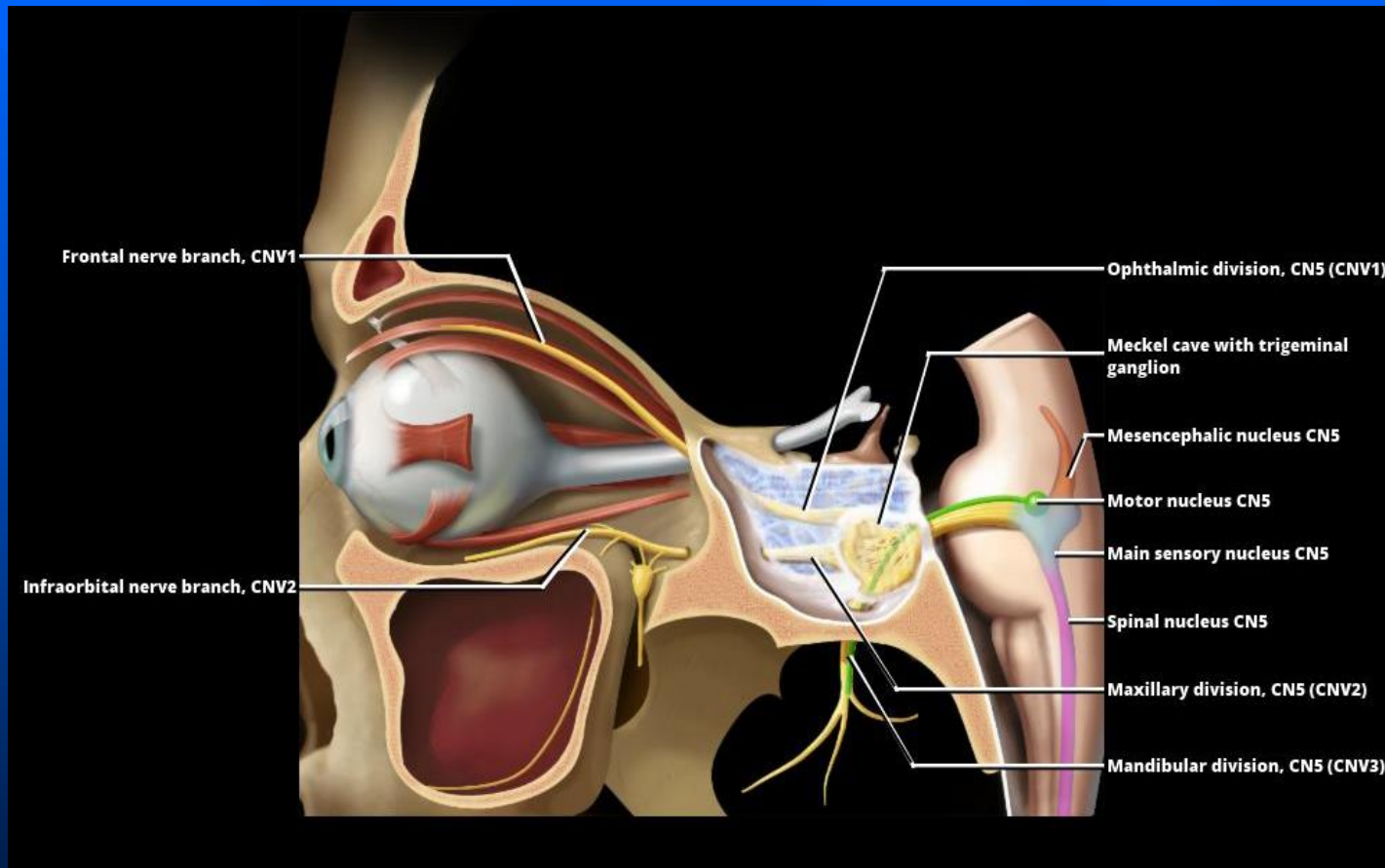


Intraorbital nerves

- CN2 (optic nerve)
 - Visual information from retina to brain
- CN3 (Oculomotor Nerve)
 - Motor to medial, superior, & inferior recti, and levator palpebrae; parasympathetic motor to iris
- CN4 (Trochlear Nerve)
 - Motor to superior oblique muscle
- CN6 (Abducent Nerve)
 - Motor to lateral rectus muscle
- CN5 (V1 = ophthalmic)
 - Sensory from orbit & eyelids (CNV1)

Infraorbital nerve



- Exits orbit through infraorbital foramen
- Sensory to cheek and upper teeth

Supraorbital foramen

- Supraorbital nerve
 - Terminal branch of the frontal nerve.
 - It passes through the supraorbital foramen, and gives off, in this situation, palpebral filaments to the upper eyelid.
 - Additionally it supplies the conjunctiva of the eye, the frontal sinus and the skin from the forehead extending back to the middle of the scalp.
- Vessels (supraorbital artery and supraorbital vein.)

