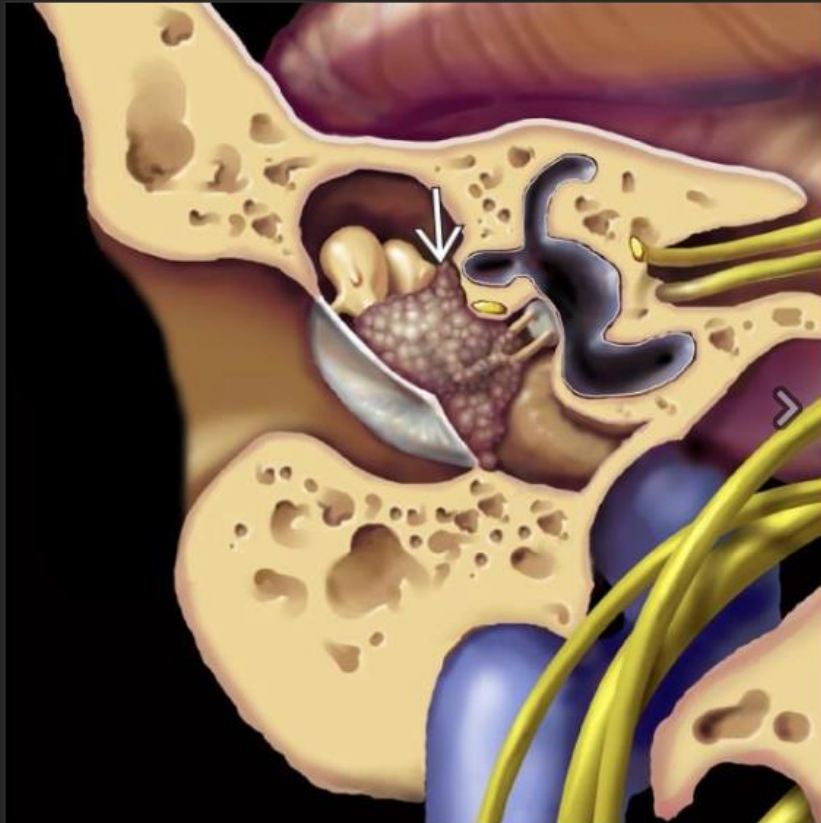


Congenital Middle Ear Cholesteatoma

- Congenital cholesteatoma (CCh)
- CCh most commonly occurs in middle ear, behind intact tympanic membrane (TM) in patient without history of surgery, otitis media, or otorrhea
- Smooth, well-circumscribed middle ear (ME) mass \pm ossicular erosions

Congenital



[Download to Presentation](#)

Coronal graphic shows congenital cholesteatoma involving the middle ear. Notice that the lesion has extended medial to the ossicles → as it engulfs the entire ossicle chain. The tympanic membrane (TM) is intact.



[Download to Presentation](#)

Axial bone CT in a 4-year-old boy without a prior history of middle ear infections shows a well-defined round mass → in the right middle ear cavity, its location and appearance consistent with congenital cholesteatoma.

Congenital Cholesteatoma, Classic

