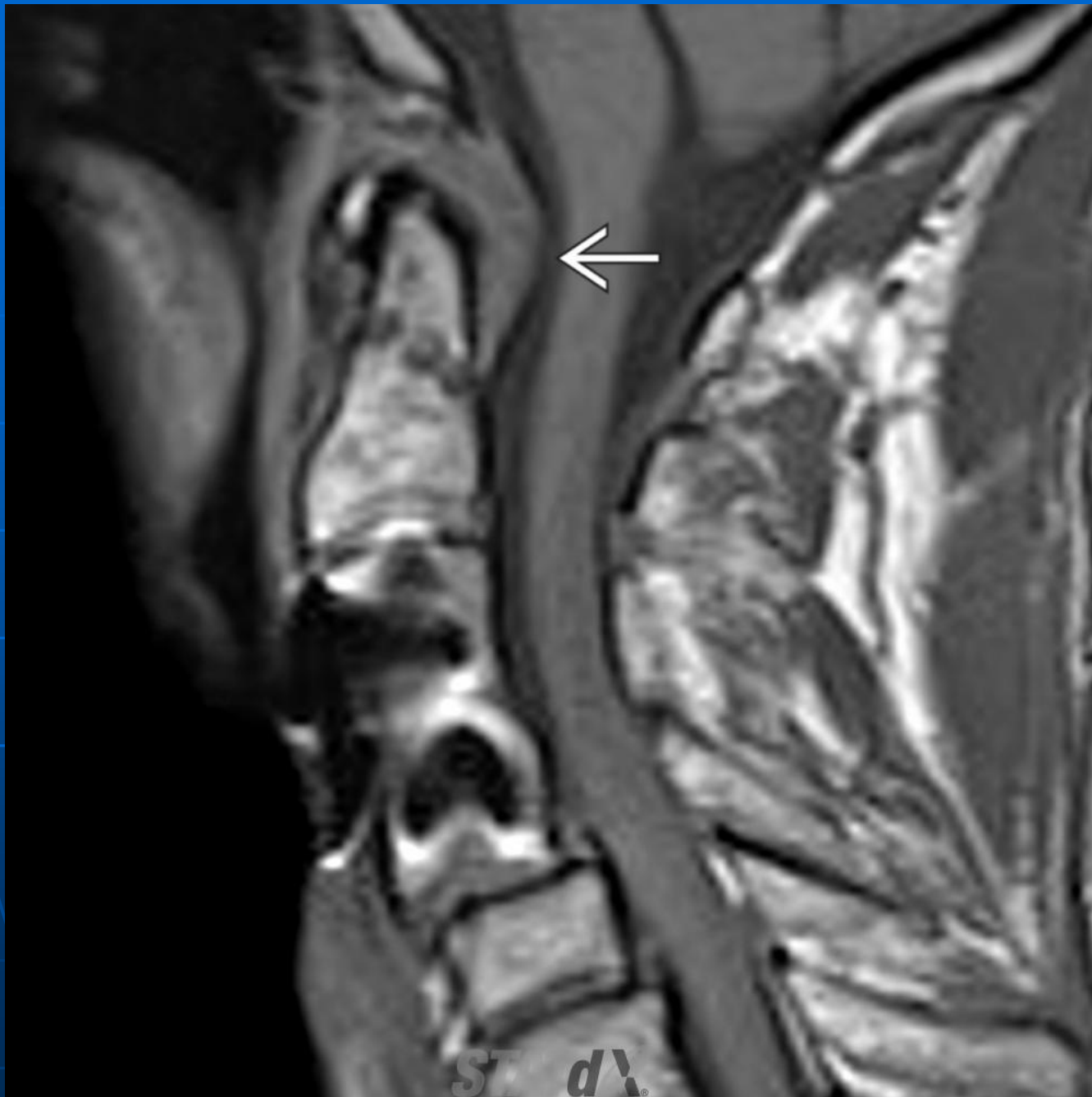


Retroodontoid Pseudotumor

- Synonym: Pseudopannus
 - Not related to rheumatoid arthritis
- Fibrous granulation tissue, fibrocartilaginous tissue.
- Most often an incidental finding
- Myelopathy due to cord compression
- May regress after craniovertebral fusion
- If symptomatic, treat with posterior stabilization

Retroodontoid Pseudotumor

- Proposed etiologies
 - Atlantoaxial instability; excessive stress at craniovertebral junction due to immobile adjacent segments
 - Cycle of damage and repair involving transverse ligament ± posterior longitudinal ligament
- May regress after craniovertebral fusion
- Look for mineralization in mass &/or erosions to aid differential diagnosis



Sagittal T1WI MR shows a pseudotumor posterior to the odontoid (white solid arrow). The mass has typical homogeneous intermediate signal. Increased stress caused by the C3-C4 fusion may have contributed to pseudotumor development.

Craniovertebral pseudotumor

